

Basie's Blues

(Track 1/18)

Alto Sax
Jim Snidero

♩ = 108

Chorus 1

1 G7 C7 G7

mp

5 C7 G7 E7

mp

9 A- D7 G7 E7alt. A- D7alt.

mp

Chorus 2

13 G7 C7 G7

mp

17 C7 G7 E7

mp

21 A- D7 G7 D7sus

f

Chorus 3

25 G7 C7 C#° G7

mp

Basie's Blues

(Track 1/18)

Bari sax
Jim Snidero

♩ = 108

Chorus 1

5

G7 C7 G7

mp

9

A- D7 G7 E7 alt. A- D7 alt.

Chorus 2

13

G7 C7 G7

mp

17

C7 G7 E7

21

A- D7 G7 D7 sus

f

Chorus 3

25

G7 C7 C#° G7

mp *f*

Basie's Blues

(Track 1/18)

from one

Jim Snidero

Chorus 1

♩ = 108

B♭7 Eb7 B♭7

mp

5 Eb7 B♭7 G7

9 C- F7 B♭7 G7alt. C- F7alt.

Chorus 2

13 B♭7 Eb7 B♭7

mp

17 Eb7 B♭7 G7

21 C- F7 B♭7 F7sus

f

Chorus 3

25 B♭7 Eb7 E° B♭7

mp

f

1 1 4 5 5

Basie's Blues

(Track 1/18)

trumpet
Jim Snidero

Chorus 1

♩ = 108

1 C7 F7 C7

5 F7 C7 A7

9 D- G7 C7 A7alt. D- G7alt.

Chorus 2

13 C7 F7 C7

17 F7 C7 A7

21 D- G7 C7 G7sus

Chorus 3

25 C7 F7 F#° C7



Track 1/17

Basie's Blues

6-55
Jim Snidero

Medium Slow Swing (♩ = 108)

Chorus 1

1 Bb7 Eb7 Bb7

5 Eb7 Bb7 G7

9 C- F7 Bb7 G7 alt. C- F7 alt.

Chorus 2

13 Bb7 Eb7 Bb7

17 Eb7 Bb7 G7

21 C- F7 Bb7 F7 sus

Chorus 3

25 Bb7 Eb7 E° Bb7

Basie's Blues

(Track 1/18)

guitar
Jim Snidero

Chorus 1

$\text{♩} = 108$

mp

Picked with thumb (optional).
Can be played 8va.

5

mp

9

mp

Chorus 2

13

mp

17

mp

21

mp

Chorus 3

25

mp

Basie's Blues

(Track 1/16)

Medium Slow Swing (♩ = 108)

Jim Snidero

Chorus 1 2 B \flat 7 E \flat 7 B \flat 7 B \flat 7

5 E \flat 7 B \flat 7 G7 alt.

9 C-7 F7#9 1. B \flat G7 alt. C-7 F7#9 2. F7sus F9

Chorus 3 25 B \flat 7 E \flat 7 E $^{\circ}$ B \flat 7 B \flat 7 E \flat 7

29 E \flat 7 E $^{\circ}$ B \flat 7 B \flat 7 G7 alt. C-7

33 F7sus B \flat 7 C-7 F7 alt.

Basie's Blues

(Track 1/16)

drums
Jim Snidero

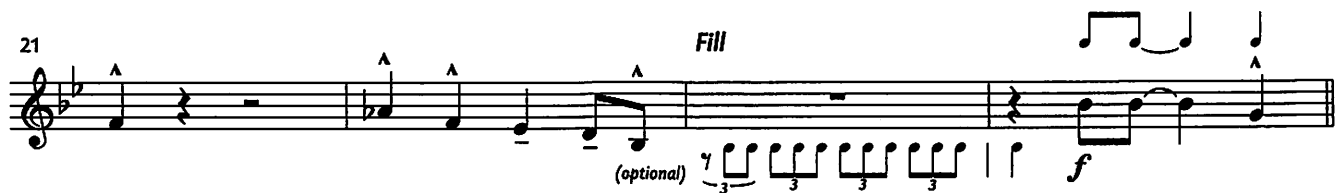
Medium Slow Swing ($\text{♩} = 108$)

Chorus 1

Hi-Hat w/stick on 2 & 4 on H.H. stand (optional)



Chorus 2



Chorus 3

